

Fuel Management Report

ABC Property Maintenance Ltd

August 2008

intelligentfleet

Eden House
101A Marsland Road
Sale
Cheshire
M33 3HS
T. 0870 285 6125
F. 0870 285 6126
E. mail@intelligentfleet.co.uk

www.intelligentfleet.co.uk

Contents

Section		Page
1	Overview and executive summary	2
2	Fuel spend analysis	3
3	Litreage analysis	6
4	Fuel economy analysis	8
5	Data review	10
6	Carbon footprint	12
Appendix I	Individual vehicle fuel economy	13

1 Introduction and executive summary

1.1 Overview

We have pleasure in presenting our fuel management report for ABC Property Maintenance for August 2008.

This report has been prepared based upon the:

- fuel card data provided; and
- key performance indicators as agreed with ABC Property Maintenance

Should any queries arise, please contact Gerard Gornall in the first instance, on 0870 285 6125 or gerard.gornall@intelligentfleet.co.uk.

1.2 Executive summary

Topic	Current	Previous	Change +/-
Fuel spend:			
Monthly spend	£43,250	-£48,437	-£5,187
Year to date	£530,371	£448,713	+£81,658
Average pump price:			
For month	123.2p	130.2p	-7.0p
Month v Nat average	123.2p	125.6p	-2.4p
Non-fuel purchases:			
Monthly spend	£115	£90	+£25
Litres drawn:			
For month	42,690	44,687	-1,997
Year to date	561,109	558,693	+2,416
Litres drawn by brand in month:			
Supermarket	41.3%	39.2%	+2.1%
Shell / BP / Esso	54.3%	55.9%	-1.6%
Jet / Q8	4.4%	4.5%	-0.1%
Other	0.0%	0.4%	-0.4%
Average miles per gallon in month:			
Small vans	47.0	47.4	-0.4
Medium vans	33.5	33.5	+0.0
Large vans	30.8	28.5	+2.3
Data review:			
Zero mileage submissions	23%	24.1%	-1.1%
Suspicious transactions	4	6	-2
Carbon footprint			
Emissions for month (tonnes)	112	117	-5
Emissions for year (tonnes)	1,474	1,469	+5

2 Fuel spend analysis

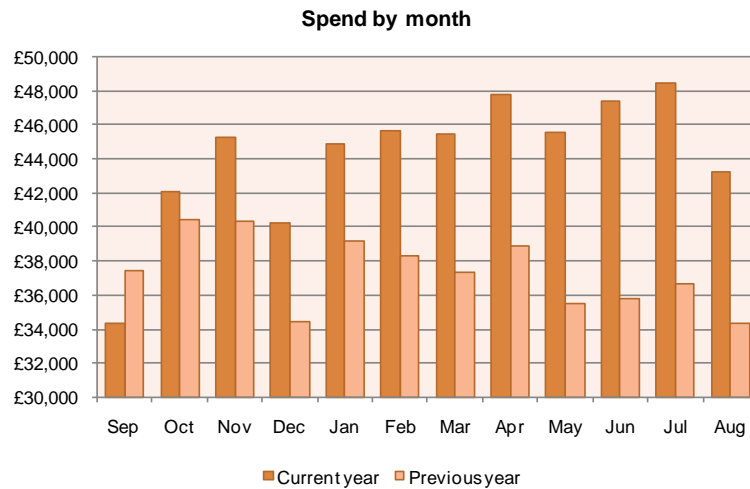
2.1 Overview

Fuel spend for August 2008 reduced by £5,187, primarily due to fewer litres being drawn in line with the seasonal variances normally experienced by ABC Property Maintenance.

2.2 Year to date

Spend for the 12 months to August 2008 is £530,371, an increase of £81,658 on the previous 12 month period. This is primarily due to increased pump prices with current prices being 29% higher than the same time last year.

A breakdown of fuel spend for the last two years is shown in the graph and table below.



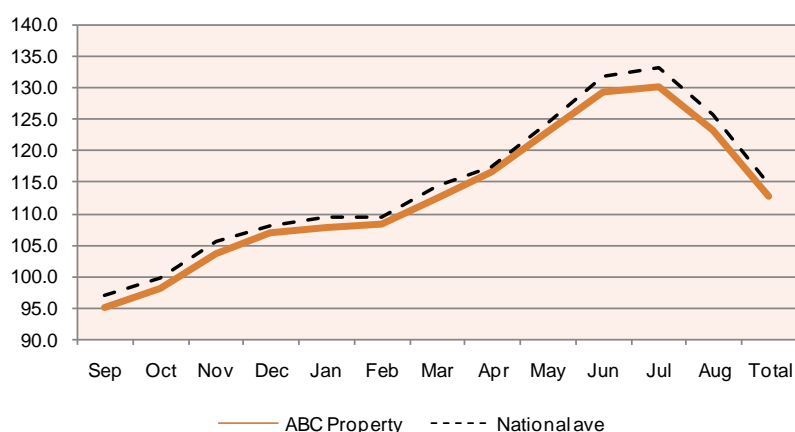
Year	Sep	Oct	Nov	Dec	Jan	Feb	Mar	Apr	May	Jun	Jul	Aug	Total
Current year	34,338	42,102	45,225	40,226	44,926	45,664	45,496	47,766	45,579	47,362	48,437	43,250	530,371
Previous year	37,392	40,428	40,297	34,488	39,132	38,350	37,338	38,867	35,534	35,834	36,680	34,373	448,713
Change	-3,054	+1,674	+4,928	+5,738	+5,794	+7,314	+8,158	+8,899	+10,045	+11,528	+11,757	+8,877	+81,658

2.3 Pump prices versus national average

In August 2008, the average price paid by ABC Property Maintenance for a litre of diesel was 123.2 pence, slightly below the national average of 125.6 pence per litre¹. This is a continuing trend as ABC Property Maintenance operates in an area where fuel prices are traditionally slightly cheaper than elsewhere. Over the last 12 months, the average pump price paid has been 1.5% below the national average.

In the graph and table overleaf we have compared diesel prices paid to the national average for the last 12 months.

Fuel prices paid vs national average



Year	Sep	Oct	Nov	Dec	Jan	Feb	Mar	Apr	May	Jun	Jul	Aug	Total
ABC Property	95.1	98.2	103.7	106.8	107.9	108.3	112.4	116.7	123.0	129.4	130.2	123.2	112.9
National ave	96.9	99.8	105.4	108.0	109.2	109.3	114.3	117.4	124.2	131.6	133.1	125.6	114.6
Change	-1.8	-1.6	-1.7	-1.2	-1.3	-1.0	-1.9	-0.7	-1.2	-2.2	-2.9	-2.4	-1.7

¹Source AA Public Affairs Fuel Price Report

2.4 Least expensive and most expensive filling stations

In the tables below we have highlighted the ten least expensive and most expensive filling stations in August 2008 based upon the average pump price paid for diesel¹.

Least expensive

Name and address	Average pump price	Total spend August 2008
Asda Paisley, Linwood Road, Paisley	119.9	£148.87
Morrisons Alloa, Sweep Road, Alloa	119.9	£174.47
Asda Alloa, Whins Road, Alloa	119.9	£139.58
Morrisons Johnstone, 30 Napier Street, Johnstone	120.6	£370.48
Shell Redmoss, Wellington Road, Aberdeen	120.6	£210.20
Tesco Stores - Tayside, Kingsway, Dundee	120.6	£201.71
Morrisons Anchor Mills, 16 Thread Street, Paisley	120.6	£736.83
Morrisons Dundee, Forfar Road, Dundee	120.8	£663.23
Shell Coatbridge 598, 331 Bank Street, Coatbridge	120.9	£141.66
Sainsburys Supermarket Limited, Baldovie Road, Dundee	120.9	£245.13

Most expensive

Name and address	Average pump price	Total spend August 2008
Malthurst Kilmarnock, Queens Drive, Kilmarnock	130.4	£189.87
Burnside Filling Station, Glasgow Road, Dumfries	129.7	£612.49
Castleview Filling Station, Main Road, Sanquhar	128.9	£212.78
Kelvin Service Station, 2 Old Dumbarton Road, Glasgow	128.7	£196.92
Haughs Filling Station, Glasgow Road, Denny	127.7	£404.02
J K Thomson & Sons, 45 Barrhill Rd, Cumnock	127.3	£172.30
Kingsway West Service Stn, Kingsway West, Dundee	127.2	£221.70
Bridgeton Filling Station, 723 London Road, Glasgow	127.0	£112.99
Kirkie Filling Station, Waterside Road, Glasgow	126.3	£293.73
Harthill North Connect, M8 Motorway Connect, Shotts	126.2	£163.33

¹Where overall spend exceeds £100 in the month

2.5 Spend by fuel brand

In the table below we have shown the average pump price paid per brand used in August 2008 compared to the price paid in July 2008. Volumes by brand type are shown in Section 3.4.

Brand	Average PPL August 2008	Average PPL July 2008	Change +/-
Asda	117.8	123.2	-5.4
BP	124.4	132.3	-7.9
Conoco/Jet	124.6	128.9	-4.3
Esso	123.8	130.1	-6.3
Jet	109.5	108.1	+1.4
Morrisons	121.4	128.7	-7.3
Q8	126.6	133.0	-6.4
Sainsbury	120.2	129.0	-8.8
Shell	121.5	125.9	-4.4
Tesco	123.0	129.6	-6.6
Overall	123.2	130.2	-7.0

2.6 Non-fuel purchases

In August 2008, there was expenditure of £115 on oil for vehicles. A breakdown of spend during the previous year is shown below.

Product	Sep	Oct	Nov	Dec	Jan	Feb	Mar	Apr	May	Jun	Jul	Aug	Total
Oil	£97	£170	£120	£144	£130	£120	£105	£101	£113	£115	£90	£115	£1,421

3 Litreage analysis

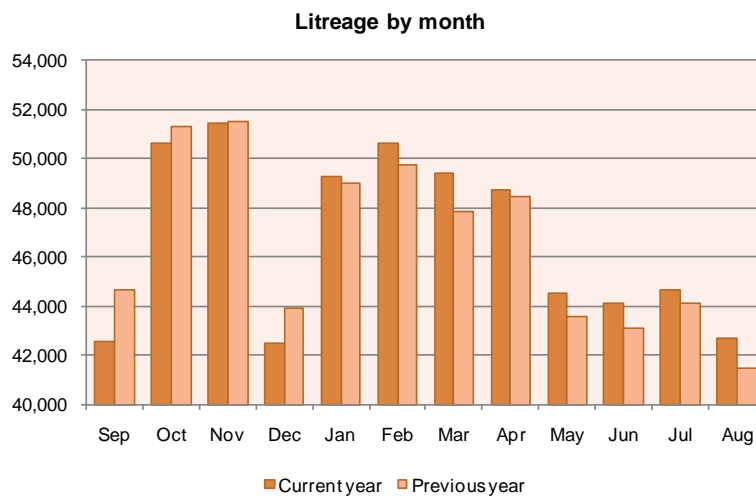
3.1 Overview

Total fuel consumption for the month of August 2008 is 42,690 litres, a reduction of 1,997 litres (4.5%) on the previous month.

3.2 Year to date

Fuel consumption for the 12 months to August 2008 is 561,109 litres, an increase of 2,416 litres on the previous 12 month period.

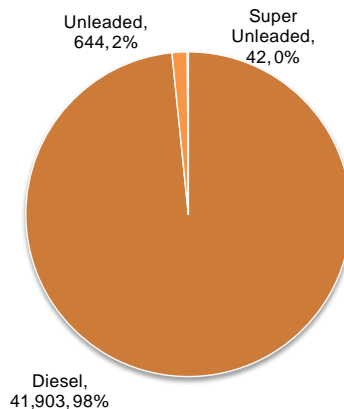
A breakdown of consumption for the last two years is shown in the graph and table below.



Year	Sep	Oct	Nov	Dec	Jan	Feb	Mar	Apr	May	Jun	Jul	Aug	Total
Current year	42,589	50,595	51,417	42,498	49,251	50,595	49,417	48,756	44,511	44,103	44,687	42,690	561,109
Previous year	44,650	51,299	51,466	43,904	48,967	49,736	47,843	48,480	43,583	43,140	44,159	41,466	558,693
Change	-2,061	-704	-49	-1,406	+284	+859	+1,574	+276	+928	+963	+528	+1,224	+2,416

3.3 Litreage by product type

As shown in the graph below, in August 2008, 99% of the fuel drawn was diesel.



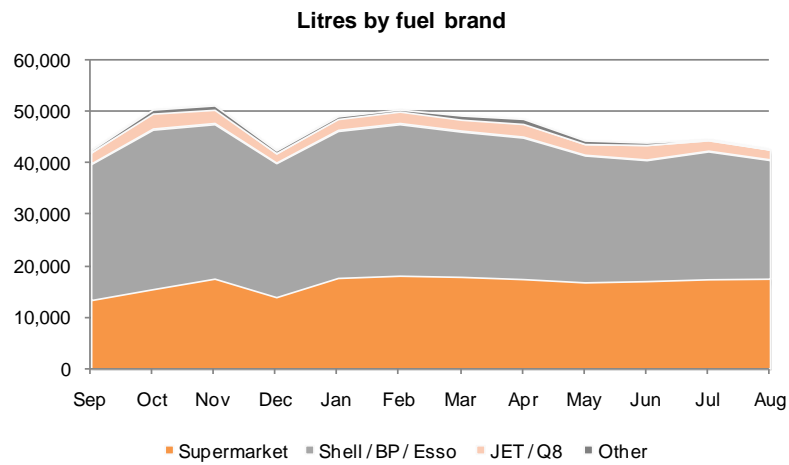
Fuel use by product type for the year is shown in the table below:

Product	Sep	Oct	Nov	Dec	Jan	Feb	Mar	Apr	May	Jun	Jul	Aug	Total
Diesel	41,903	50,088	50,755	41,839	48,320	49,913	49,026	48,156	44,096	43,742	44,398	42,198	554,434
Unleaded	644	507	615	629	886	642	391	600	415	313	289	425	6,356
Super Unl.	42	0	47	30	45	40	0	0	0	48	0	67	319
Total	42,589	50,595	51,417	42,498	49,251	50,595	49,417	48,756	44,511	44,103	44,687	42,690	561,109

3.4 Litreage by brand

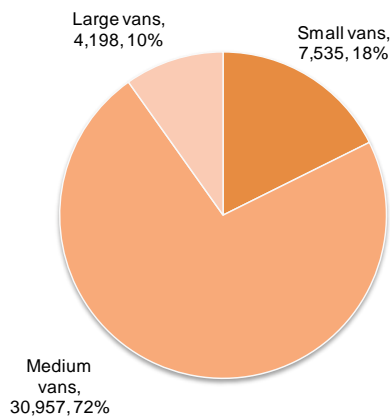
In August 2008, 41.3% of fuel was purchased from supermarket outlets, an increase of 2.1% on the previous month and continuing the trend away from traditionally more expensive branded filling stations.

In the graph below we have illustrated the litreage by fuel brands purchased over the last year.



3.5 Litreage by vehicle type

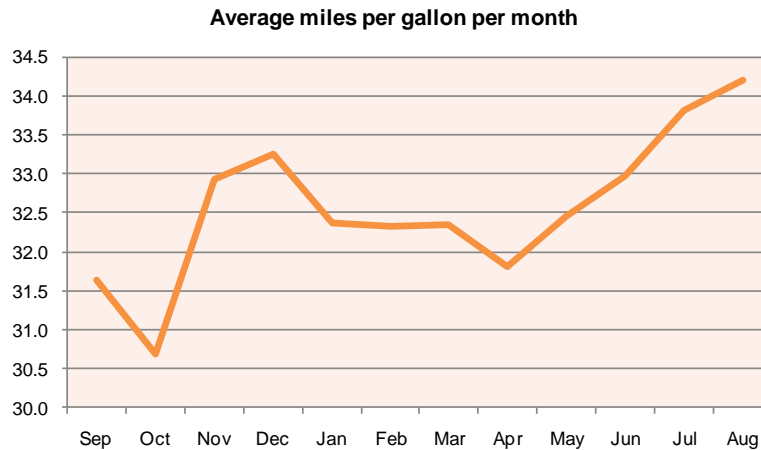
In the graph below we have shown the total fuel consumption in litres for August 2008 by vehicle type.



4 Fuel economy analysis

4.1 Overall fuel economy

Overall fuel economy for ABC Property Maintenance vehicles for August 2008 is 34.2 miles per gallon. In the graph and table below we have shown performance over the previous 12 months.



MPG	Sep	Oct	Nov	Dec	Jan	Feb	Mar	Apr	May	Jun	Jul	Aug	12 mth ave
All vehicles	31.6	30.7	32.9	33.3	32.4	32.3	32.3	31.8	32.4	33.0	33.8	34.2	32.6

As can be seen from the above, fuel economy is generally improving. This will partly be due to the fact that newer vehicles on the fleet are likely to be more efficient than outgoing models.

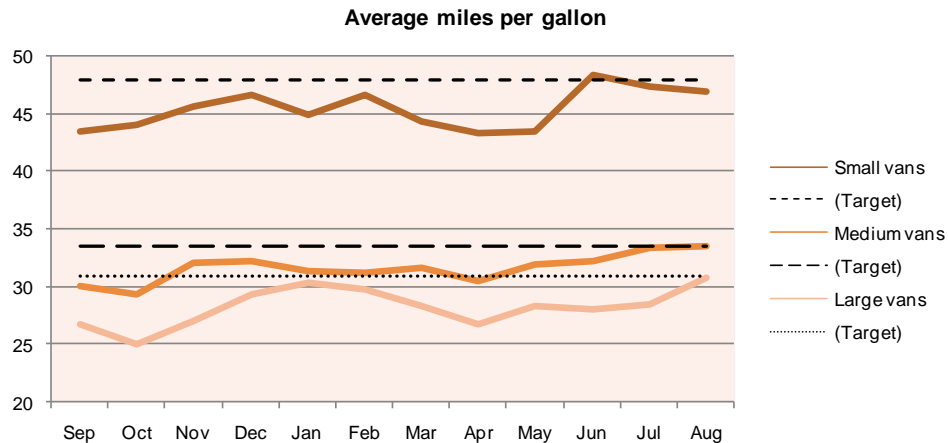
4.2 Fuel economy by vehicle type

Fuel economy for individual vehicles is assessed on a three-month rolling basis. In the table below we have shown the figures for August 2008 against the agreed target levels.

Type	MPG 3 months to August 2008	Target mpg	Difference to target
Small vans	47.0	48.0	-1.0
Medium vans	33.5	33.5	+0.0
Large vans	30.8	31.0	-0.2

As can be seen from the above, current performance is only marginally below target levels. Overall, there has been a continued improvement in fuel economy, although this will be partly due to improved road conditions over the summer months.

In the graph and table overleaf we have shown performance over the previous 12 months.



Type	Sep	Oct	Nov	Dec	Jan	Feb	Mar	Apr	May	Jun	Jul	Aug	12 mth ave
Small vans	43.4	44.1	45.7	46.6	44.9	46.7	44.3	43.3	43.4	48.4	47.4	47.0	45.4
Medium vans	30.1	29.4	32.1	32.2	31.4	31.3	31.6	30.6	31.9	32.2	33.4	33.5	31.9
Large vans	26.8	25.0	27.0	29.4	30.4	29.8	28.3	26.7	28.3	28.1	28.5	30.8	28.6

4.3 Best and worst performing vehicles

In the tables below we have shown the top ten best and worst performing vehicles against target levels based upon the three months to August 2008.

Best performing vehicles

Reg. number	Vehicle	MPG 3 months to August 2008	Target mpg	Difference to target	Percentage of target
BL04##F	Vauxhall Movano	38.5	31.0	+7.5	124.2%
BN54##M	Vauxhall Vivaro	39.3	33.5	+5.8	117.3%
BV05##N	Vauxhall Vivaro	39.2	33.5	+5.7	117.0%
YG07##A	Ford Transit	38.6	33.5	+5.1	115.2%
BK57##P	Ford Transit	37.9	33.5	+4.4	113.1%
BK04##V	Vauxhall Vivaro	37.7	33.5	+4.2	112.5%
BK57##Y	Ford Transit	37.6	33.5	+4.1	112.2%
BN57##B	Ford Transit	37.5	33.5	+4.0	111.9%
BN54##H	Vauxhall Vivaro	37.5	33.5	+4.0	111.9%
YE57##D	Ford Transit	37.5	33.5	+4.0	111.9%

Worst performing vehicles

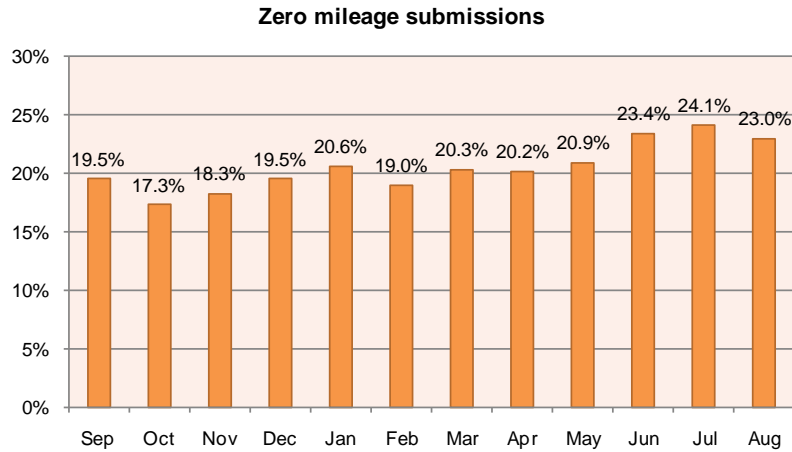
Reg. number	Vehicle	MPG 3 months to August 2008	Target mpg	Difference to target	Percentage of target
BL04##C	Vauxhall Movano	25.0	31.0	-6.0	80.6%
BJ04##F	Vauxhall Vivaro	27.5	33.5	-6.0	82.1%
BK57##B	Ford Transit	27.7	33.5	-5.8	82.7%
BP04##E	Vauxhall Combo	40.2	48.0	-7.8	83.8%
BJ04##E	Vauxhall Vivaro	28.8	33.5	-4.7	86.0%
BP53##U	Vauxhall Vivaro	28.9	33.5	-4.6	86.3%
BP53##Y	Vauxhall Combo	42.0	48.0	-6.0	87.5%
YD07##J	Ford Transit	29.5	33.5	-4.0	88.1%
BK57##Z	Ford Transit	29.6	33.5	-3.9	88.4%
BV05##G	Vauxhall Movano	27.6	31.0	-3.4	89.0%

We recommend that ABC Property Maintenance undertake investigations to understand the reasons behind poor performing vehicles with a view to making improvements. A full breakdown of vehicle fuel economy levels is shown in Appendix I.

5 Data review

5.1 Integrity of data for management reporting

As can be seen from the graph below, data integrity continues to be a problem for ABC Property Maintenance. In August 2008 there were 113 transactions (23% of the total) where no mileage was provided by the driver of the vehicle to the cashier when refuelling.



We recommend that ABC Property Maintenance issue further communications to drivers to reinforce the need to provide mileage data, and where possible, provide details of continuing offenders to line management.

5.2 Vehicles with persistent non-submission of mileage

In the table below we have listed vehicles where there were four or more transactions in August 2008 with no mileage given.

Reg. number	Number of zero mileage transactions
BJ54##V	5
BF57##X	4
BN54##C	4
BN57##W	4
BV04##E	4
BV04##D	4
YD07##T	4

If the data issue can be resolved, the management information provided through this report could be greatly improved.

5.3 Transactions for investigation

We have analysed fuel transactions for August 2008 and recommend that ABC Property Maintenance examine the transactions listed overleaf.

Fuel cards twice on same day

Card No	Date	Reg No	Product	Litres	Net cost	Supplier
707260028976823	05/08/2008	BP04##J	DIESEL	69.47	£73.85	Morrisons Dumbarton
707260028976823	05/08/2008	BP04##J	DIESEL	65.84	£69.99	Glasgow St Rollox Pfs

Unleaded fuel in diesel vehicles

Card No	Date	Reg No	Product	Litres	Net cost	Supplier
707260043218326	07/08/2008	BD54##E	NORMAL UN	40.86	£38.91	Shell Fullarton 763
707260039076738	05/08/2008	BD54##N	NORMAL UN	43.61	£41.91	Ruthrieston Service Station
707260039076738	15/08/2008	BD54##N	NORMAL UN	41.47	£38.79	Ruthrieston Service Station

6 Carbon footprint

6.1 Overview

A carbon footprint is the impact of activities on the environment in terms of the amount of greenhouse gases produced, measured in units of CO₂. In accordance with standard guidelines for measurement of fleet emissions, we have calculated the carbon footprint for ABC Property Management.

6.2 Carbon footprint

For August 2008, total CO₂ emissions are 112 tonnes, a decrease of 5 tonnes on the previous month. Emissions for the year to date are 1,474 tonnes, an increase of 5 tonnes over the previous 12 months.

A monthly breakdown of CO₂ emissions in tonnes is shown in the table below.

Year	Sep	Oct	Nov	Dec	Jan	Feb	Mar	Apr	May	Jun	Jul	Aug	Total
Current year	112	133	135	112	129	133	130	128	117	116	117	112	1,474
Previous year	117	135	135	115	129	131	126	128	115	113	116	109	1,469
Change	-5	-2	+0	-3	+0	+2	+4	+0	+2	+3	+1	+3	+5

Appendix I

Individual vehicle fuel economy analysis

The figures below are based upon a three-month rolling assessment of individual vehicle mpg levels. For example, the figures for August 2008 represent fuel economy over the months of June, July and August 2008. Where no figures are shown, insufficient data is available to calculate an accurate figure.

Small vans - target = 48.0 mpg

Reg. number	Vehicle	2007				2008								Diff to target	% target
		Sep	Oct	Nov	Dec	Jan	Feb	Mar	Apr	May	Jun	Jul	Aug		
BP04##E	Vauxhall Combo	45.5	47.5	53.3	53.1	52.8	51.0	44.8	41.2	40.0	-	39.9	40.2	-7.8	83.8%
BP53##Y	Vauxhall Combo	-	-	36.7	-	32.6	50.8	45.6	38.5	38.5	-	-	42.0	-6.0	87.5%
BV04##U	Vauxhall Combo	41.9	-	46.3	45.1	-	43.5	-	42.6	42.6	-	45.3	42.9	-5.1	89.4%
BJ54##X	Vauxhall Combo	39.9	41.3	44.3	43.4	41.9	40.8	40.4	39.6	43.3	44.6	44.5	43.8	-4.2	91.3%
BN54##A	Vauxhall Combo	-	-	-	-	-	-	46.1	-	32.0	46.0	45.0	44.9	-3.1	93.5%
BP53##Y	Vauxhall Combo	44.1	-	43.5	46.4	45.0	46.4	46.1	45.7	-	46.1	-	45.8	-2.2	95.4%
BJ53##O	Vauxhall Combo	40.2	-	37.6	40.1	39.8	39.7	39.5	39.6	42.7	46.5	49.3	45.9	-2.1	95.6%
BP53##X	Vauxhall Combo	42.5	41.8	47.1	44.7	45.7	45.4	47.1	45.9	47.2	46.4	46.3	46.8	-1.2	97.5%
BP04##K	Vauxhall Combo	43.2	42.3	44.8	44.5	44.9	45.0	45.1	44.9	45.6	47.4	48.0	47.8	-0.2	99.6%
BV04##U	Vauxhall Combo	41.8	43.9	40.1	38.9	38.2	44.0	43.4	41.3	46.5	48.2	52.3	48.1	+0.1	100.2%
BD53##K	Vauxhall Combo	44.1	-	-	43.8	45.2	48.9	44.2	44.2	41.8	47.5	49.4	48.2	+0.2	100.4%
BJ54##R	Vauxhall Combo	44.1	42.4	44.9	46.0	45.6	43.3	43.2	44.9	47.9	48.9	49.3	48.2	+0.2	100.4%
BJ54##V	Vauxhall Combo	-	-	-	-	-	46.6	45.2	45.5	48.0	50.6	-	49.1	+1.1	102.3%
BJ54##U	Vauxhall Combo	44.8	44.3	48.3	48.1	47.9	47.0	45.7	44.4	49.6	50.8	50.6	49.5	+1.5	103.1%
BL04##V	Vauxhall Combo	-	-	-	52.8	53.0	50.0	29.7	33.0	35.4	52.6	53.0	51.1	+3.1	106.5%
BP53##J	Vauxhall Combo	-	44.3	47.7	47.7	45.4	48.1	-	53.4	-	52.7	51.8	52.1	+4.1	108.5%
BP53##N	Vauxhall Combo	45.8	46.9	51.0	49.2	47.3	46.9	-	-	53.3	-	-	52.3	+4.3	109.0%
BV04##Z	Vauxhall Combo	38.1	39.0	-	39.3	36.4	-	-	34.3	38.1	-	43.0	-	-	-
BP53##Z	Vauxhall Combo	-	42.9	44.1	-	37.7	-	-	36.7	-	-	38.7	-	-	-
BP53##U	Vauxhall Combo	38.5	-	40.4	42.6	-	-	-	-	-	-	-	-	-	-
BP53##U	Vauxhall Combo	-	-	48.7	-	-	-	38.2	-	-	-	-	-	-	-
BP53##Y	Vauxhall Combo	42.2	42.3	46.6	45.8	44.0	-	-	-	-	-	-	-	-	-
BV04##X	Vauxhall Combo	-	-	45.2	-	-	41.0	-	-	43.8	44.4	47.0	-	-	-
BP53##O	Vauxhall Combo	-	-	-	50.0	-	-	45.2	-	45.6	52.3	-	-	-	-
BV04##P	Vauxhall Combo	-	-	43.0	51.1	53.1	50.2	49.8	49.5	-	-	-	-	-	-
BJ53##X	Vauxhall Combo	-	48.0	52.0	-	-	-	-	-	-	-	-	-	-	-
BV04##F	Vauxhall Combo	49.4	-	-	51.6	48.8	52.5	49.7	48.9	-	49.0	53.0	-	-	-
BV04##A	Vauxhall Combo	51.3	51.1	54.5	53.5	53.1	52.9	52.3	51.8	-	-	-	-	-	-
Average		43.4	44.1	45.7	46.6	44.9	46.7	44.3	43.3	43.4	48.4	47.4	47.0	-1.0	97.9%

Medium vans - target = 33.5 mpg

Reg. number	Vehicle	2007				2008								Diff to target	Diff to target
		Sep	Oct	Nov	Dec	Jan	Feb	Mar	Apr	May	Jun	Jul	Aug		
BJ04##F	Vauxhall Vivaro	26.4	33.7	25.2	-	16.2	20.0	-	28.4	28.5	27.6	26.8	27.5	-6.0	82.1%
BK57##B	Ford Transit	-	-	-	24.9	21.8	21.0	21.0	25.8	26.6	20.2	27.1	27.7	-5.8	82.7%
BJ04##E	Vauxhall Vivaro	-	-	-	23.9	24.3	-	29.9	24.2	32.2	30.7	25.8	28.8	-4.7	86.0%
BP53##U	Vauxhall Vivaro	-	-	33.9	31.9	-	28.7	27.9	-	27.6	28.5	29.5	28.9	-4.6	86.3%
YD07##J	Ford Transit	-	-	-	-	-	-	29.3	39.9	31.3	30.3	29.6	29.5	-4.0	88.1%
BK57##Z	Ford Transit	-	-	-	-	28.0	29.8	27.4	-	24.1	25.3	-	29.6	-3.9	88.4%
BK04##A	Vauxhall Vivaro	-	-	-	-	-	-	-	23.0	28.0	29.9	29.9	29.9	-3.6	89.3%
BK57##F	Ford Transit	-	-	-	-	-	30.5	30.1	-	30.2	-	-	30.1	-3.4	89.9%
BJ54##W	Vauxhall Vivaro	28.1	26.6	30.6	-	29.9	29.6	29.4	29.3	29.9	30.7	30.0	30.2	-3.3	90.1%

BJ54##K	Vauxhall Vivaro	31.0	30.2	-	36.7	32.1	-	31.9	30.0	-	32.7	30.4	30.9	-2.6	92.2%
BJ04##G	Vauxhall Vivaro	30.2	-	29.1	31.2	31.7	31.7	31.8	31.1	32.4	-	30.5	31.0	-2.5	92.5%
YE57##B	Ford Transit	-	-	-	-	-	-	29.8	-	32.2	32.9	-	31.2	-2.3	93.1%
BK57##G	Ford Transit	-	-	-	-	24.9	28.4	28.4	28.4	30.0	-	30.3	31.3	-2.2	93.4%
BK57##H	Ford Transit	-	-	-	22.0	35.2	-	-	22.6	-	-	29.7	31.4	-2.1	93.7%
BJ04##L	Vauxhall Vivaro	-	32.7	-	34.8	34.4	-	-	31.8	31.9	32.8	33.6	31.5	-2.0	94.0%
BK04##U	Vauxhall Vivaro	29.8	27.9	30.0	30.6	31.1	31.8	30.9	30.6	30.9	31.8	32.5	32.1	-1.4	95.8%
BJ54##E	Vauxhall Vivaro	-	29.0	32.2	-	32.9	28.6	-	31.4	33.3	-	34.4	32.1	-1.4	95.8%
BP53##F	Vauxhall Vivaro	-	-	-	36.4	-	34.3	32.8	-	30.7	30.9	31.7	32.1	-1.4	95.8%
BJ04##C	Vauxhall Vivaro	31.9	32.7	35.1	-	34.1	33.3	33.4	33.3	32.1	31.1	31.2	32.1	-1.4	95.8%
BD53##N	Vauxhall Vivaro	30.1	-	-	29.0	28.2	29.2	30.7	-	31.7	-	-	32.2	-1.3	96.1%
BK57##N	Ford Transit	-	-	-	-	25.5	28.5	31.9	30.1	31.6	31.9	32.3	32.2	-1.3	96.1%
BP53##O	Vauxhall Vivaro	31.2	30.4	34.5	32.0	31.7	29.0	31.2	30.4	33.0	32.3	-	32.2	-1.3	96.1%
YG07##Y	Ford Transit	-	-	-	-	-	-	-	31.4	22.3	27.9	28.2	32.4	-1.1	96.7%
BV04##X	Vauxhall Vivaro	30.1	-	30.7	31.7	30.7	30.9	30.8	29.9	30.8	31.4	31.6	32.5	-1.0	97.0%
YG07##F	Ford Transit	-	-	-	-	-	-	29.6	-	33.1	32.1	-	32.8	-0.7	97.9%
BD53##T	Vauxhall Vivaro	-	-	-	27.4	-	25.9	-	25.3	26.5	27.9	31.9	33.2	-0.3	99.1%
YG07##K	Ford Transit	-	-	-	-	-	-	33.4	36.6	37.6	-	37.4	33.4	-0.1	99.7%
BV05##L	Vauxhall Vivaro	-	29.8	35.2	34.0	33.4	32.7	32.1	-	27.0	34.1	-	33.5	+0.0	100.0%
BN57##J	Ford Transit	-	-	-	-	-	-	34.5	-	35.7	-	33.0	33.5	+0.0	100.0%
BV04##X	Vauxhall Vivaro	30.1	29.2	31.9	35.4	33.6	34.2	-	35.0	37.7	-	-	33.9	+0.4	101.2%
BP53##X	Vauxhall Vivaro	28.7	-	29.3	31.2	30.4	30.3	30.0	28.3	31.0	33.1	33.1	34.0	+0.5	101.5%
BP04##V	Vauxhall Vivaro	29.9	27.1	37.0	37.9	35.0	36.2	35.7	34.1	35.1	33.1	32.7	34.1	+0.6	101.8%
BN57##F	Ford Transit	-	-	-	-	21.3	26.6	28.9	32.9	35.6	36.2	34.1	34.2	+0.7	102.1%
BJ54##C	Vauxhall Vivaro	28.8	28.3	31.4	30.9	31.1	30.9	29.9	29.8	32.7	-	35.5	34.2	+0.7	102.1%
BK57##D	Ford Transit	-	-	-	-	28.2	31.1	31.3	-	33.7	32.6	-	34.3	+0.8	102.4%
BK57##Z	Ford Transit	-	-	-	-	29.4	31.1	31.5	31.9	33.5	33.8	33.7	34.3	+0.8	102.4%
BD54##Z	Vauxhall Vivaro	30.2	-	31.6	34.4	-	33.4	-	30.4	31.9	-	34.0	34.4	+0.9	102.7%
BJ04##Y	Vauxhall Vivaro	31.5	31.5	33.8	33.3	32.5	35.4	32.2	32.8	29.5	34.4	35.1	34.7	+1.2	103.6%
BJ54##U	Vauxhall Vivaro	-	-	-	31.2	-	-	-	-	37.3	-	34.3	34.7	+1.2	103.6%
BJ54##F	Vauxhall Vivaro	34.2	-	-	-	35.7	35.8	35.1	34.8	35.1	34.7	35.0	35.1	+1.6	104.8%
BK57##T	Ford Transit	-	-	-	-	-	33.8	37.3	16.5	32.7	33.6	34.0	35.3	+1.8	105.4%
BD04##Z	Vauxhall Vivaro	30.9	-	-	31.3	30.0	-	29.9	29.1	30.7	34.4	34.9	35.8	+2.3	106.9%
BK57##F	Ford Transit	-	-	-	-	27.4	-	-	26.0	27.8	-	36.4	-	+2.9	108.7%
YG07##E	Ford Transit	-	-	-	-	-	-	31.5	35.4	34.6	34.8	35.6	36.5	+3.0	109.0%
BV04##W	Vauxhall Vivaro	-	-	34.6	35.7	-	37.3	-	28.3	35.7	-	36.6	36.5	+3.0	109.0%
BN54##L	Vauxhall Vivaro	-	-	-	34.6	32.9	34.5	33.7	30.4	31.5	31.9	34.9	36.7	+3.2	109.6%
BN57##B	Ford Transit	-	-	-	-	-	24.4	31.5	30.4	30.8	32.4	33.6	37.5	+4.0	111.9%
BN54##H	Vauxhall Vivaro	27.9	-	26.8	31.1	-	32.7	-	31.6	29.2	-	36.4	37.5	+4.0	111.9%
YE57##D	Ford Transit	-	-	-	-	-	-	-	35.1	-	-	38.6	37.5	+4.0	111.9%
BK57##Y	Ford Transit	-	-	-	-	-	-	-	-	-	-	-	37.6	+4.1	112.2%
BK04##V	Vauxhall Vivaro	-	-	38.8	-	-	36.8	-	32.5	36.0	38.1	38.5	37.7	+4.2	112.5%
BK57##P	Ford Transit	-	-	-	29.9	33.5	27.4	27.6	27.3	35.4	36.9	38.1	37.9	+4.4	113.1%
YG07##A	Ford Transit	-	-	-	-	-	-	38.0	34.2	36.7	30.1	38.6	38.6	+5.1	115.2%
BV05##N	Vauxhall Vivaro	37.4	-	-	40.0	39.3	37.7	36.1	34.0	36.2	36.6	37.8	39.2	+5.7	117.0%
BN54##M	Vauxhall Vivaro	-	-	-	-	-	-	-	-	37.9	38.9	38.3	39.3	+5.8	117.3%
BP53##X	Vauxhall Vivaro	23.4	21.5	26.3	25.3	-	25.4	24.4	-	24.9	25.2	-	-	-	-
BD53##C	Vauxhall Vivaro	26.2	25.7	-	27.9	-	-	-	-	-	-	-	-	-	-
BJ54##C	Vauxhall Vivaro	26.8	28.3	28.4	27.3	26.6	27.9	28.9	-	29.8	-	-	-	-	-
BV04##U	Vauxhall Vivaro	-	18.2	-	34.5	-	-	-	25.9	-	27.1	34.1	-	-	-
BV04##U	Vauxhall Vivaro	-	-	21.1	33.5	-	32.2	-	-	-	-	-	-	-	-
BK04##P	Vauxhall Vivaro	28.9	28.0	31.2	31.1	30.5	29.9	29.2	-	-	-	-	-	-	-
BV04##U	Vauxhall Vivaro	26.5	-	28.5	-	32.1	31.5	29.5	-	30.3	31.3	-	-	-	-
BV04##F	Vauxhall Vivaro	-	-	30.4	-	-	29.8	-	-	-	-	-	-	-	-
BJ04##D	Vauxhall Vivaro	-	-	-	-	30.6	-	-	29.8	-	-	-	-	-	-
BJ54##C	Vauxhall Vivaro	-	30.3	30.3	29.9	-	-	-	-	-	-	-	-	-	-
BV04##Y	Vauxhall Vivaro	28.4	18.9	31.4	31.4	37.8	29.7	-	28.8	32.6	-	32.9	-	-	-
BP53##U	Vauxhall Vivaro	26.2	27.2	34.4	-	27.2	24.9	-	32.0	35.0	35.5	-	-	-	-
BV04##X	Vauxhall Vivaro	28.9	31.9	33.8	33.4	30.6	29.1	-	-	-	-	-	-	-	-
BP53##O	Vauxhall Vivaro	31.0	32.5	33.7	32.0	31.1	30.9	30.7	29.7	31.5	29.9	32.6	-	-	-
BV04##U	Vauxhall Vivaro	-	-	30.9	-	-	30.9	-	32.7	-	-	-	-	-	-

BK04##T	Vauxhall Vivaro	-	30.9	-	-	-	-	-	-	-	32.2	31.8	-	-	-
BV04##F	Vauxhall Vivaro	-	31.9	34.4	33.7	-	35.6	31.4	-	26.3	27.7	-	-	-	-
BJ54##X	Vauxhall Vivaro	-	29.5	35.1	-	36.0	31.4	32.3	28.8	-	29.9	-	-	-	-
BL54##X	Vauxhall Vivaro	-	27.5	37.2	33.0	31.6	30.4	-	-	-	-	-	-	-	-
BN54##X	Vauxhall Vivaro	28.1	27.9	31.7	31.1	37.9	38.9	35.3	27.5	29.8	31.7	32.6	-	-	-
BD53##V	Vauxhall Vivaro	28.8	29.0	33.0	32.6	35.1	32.8	33.5	32.1	-	-	-	-	-	-
BV04##P	Vauxhall Vivaro	31.0	-	32.3	34.4	34.4	30.0	-	-	-	-	-	-	-	-
BP53##V	Vauxhall Vivaro	31.6	-	30.7	33.0	32.3	32.7	32.4	36.8	32.8	34.7	-	-	-	-
BD04##A	Vauxhall Vivaro	32.1	31.7	33.7	33.6	-	33.2	-	-	34.3	-	34.9	-	-	-
BJ54##X	Vauxhall Vivaro	-	29.0	34.1	-	-	34.7	-	-	34.0	-	35.3	-	-	-
BV05##K	Vauxhall Vivaro	-	-	-	29.6	-	33.8	37.0	-	-	-	-	-	-	-
YD07##C	Vauxhall Vivaro	-	-	-	-	-	-	31.1	33.0	-	36.6	-	-	-	-
BP53##Y	Vauxhall Vivaro	32.5	32.1	32.8	33.0	33.9	34.0	33.5	-	34.3	35.4	36.5	-	-	-
BJ04##M	Vauxhall Vivaro	33.0	32.7	-	36.3	34.6	-	33.6	31.8	33.8	35.2	-	-	-	-
BJ04##P	Vauxhall Vivaro	-	31.5	37.2	35.5	-	-	-	-	-	-	-	-	-	-
BN54##L	Vauxhall Vivaro	33.9	34.7	36.6	36.8	37.3	38.9	37.3	36.7	30.8	35.3	35.2	-	-	-
BP53##R	Vauxhall Vivaro	-	-	32.4	-	-	-	-	-	-	39.1	-	-	-	-
BJ04##R	Vauxhall Vivaro	-	-	-	-	-	-	-	-	36.6	37.3	36.7	-	-	-
BV05##J	Vauxhall Vivaro	38.0	37.4	-	39.7	38.5	39.7	38.6	-	-	-	-	-	-	-
Average		30.1	29.4	32.1	32.2	31.4	31.3	31.6	30.6	31.9	32.2	33.4	33.5	+0.0	100.0%

Large vans - target = 31.0 mpg

Reg. number	Vehicle	2007				2008								Diff to target	Diff to target
		Sep	Oct	Nov	Dec	Jan	Feb	Mar	Apr	May	Jun	Jul	Aug		
BL04##C	Vauxhall Movano	-	-	-	-	-	-	17.3	18.1	-	21.8	24.0	25.0	-6.0	80.6%
BV05##G	Vauxhall Movano	-	-	26.6	-	-	-	-	-	-	30.6	-	27.6	-3.4	89.0%
BV05##H	Vauxhall Movano	26.1	24.4	26.7	29.1	28.7	28.6	28.6	28.1	28.0	27.3	28.6	29.2	-1.8	94.2%
BL04##P	Vauxhall Movano	26.8	25.5	30.2	29.8	33.5	30.7	31.1	26.7	28.2	27.9	30.1	29.8	-1.2	96.1%
BL04##U	Vauxhall Movano	25.5	-	24.9	28.8	28.5	29.4	30.4	-	28.0	26.6	15.1	31.8	+0.8	102.6%
BV05##K	Vauxhall Movano	28.6	-	-	24.4	-	30.1	28.8	-	30.1	30.5	31.3	32.3	+1.3	104.2%
BV05##M	Vauxhall Movano	-	-	24.9	30.5	31.8	-	27.1	27.6	-	32.6	30.9	32.5	+1.5	104.8%
BL04##F	Vauxhall Movano	28.1	-	27.3	31.8	-	34.1	32.9	-	-	-	39.8	38.5	+7.5	124.2%
BL54##H	Vauxhall Movano	25.9	25.1	28.5	27.8	27.0	26.1	26.9	26.9	27.4	27.8	28.4	-	-	-
BV05##A	Vauxhall Movano	-	-	-	32.9	33.0	-	31.9	33.0	-	-	-	-	-	-
Average		26.8	25.0	27.0	29.4	30.4	29.8	28.3	26.7	28.3	28.1	28.5	30.8	-0.2	99.4%